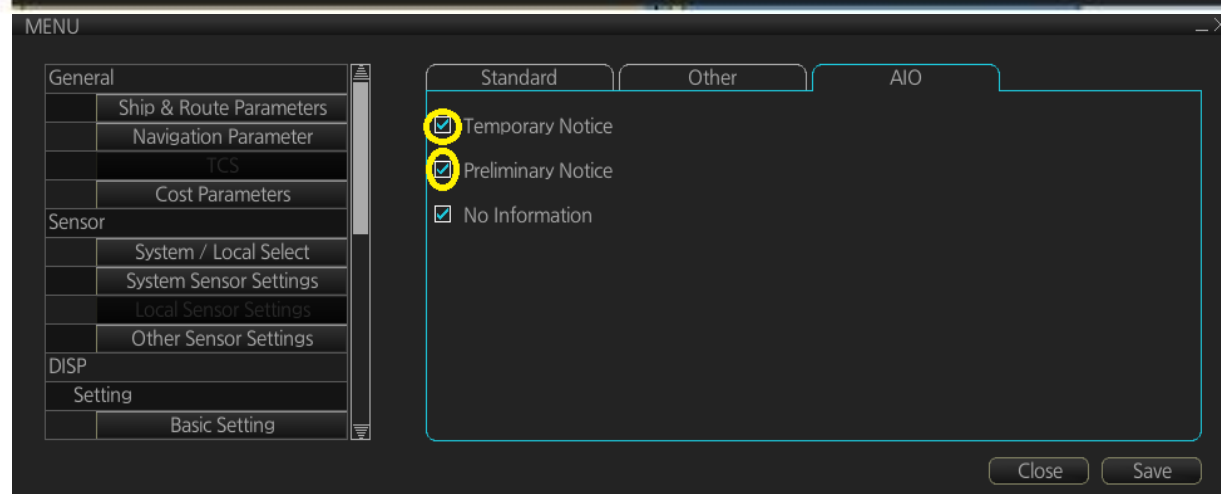
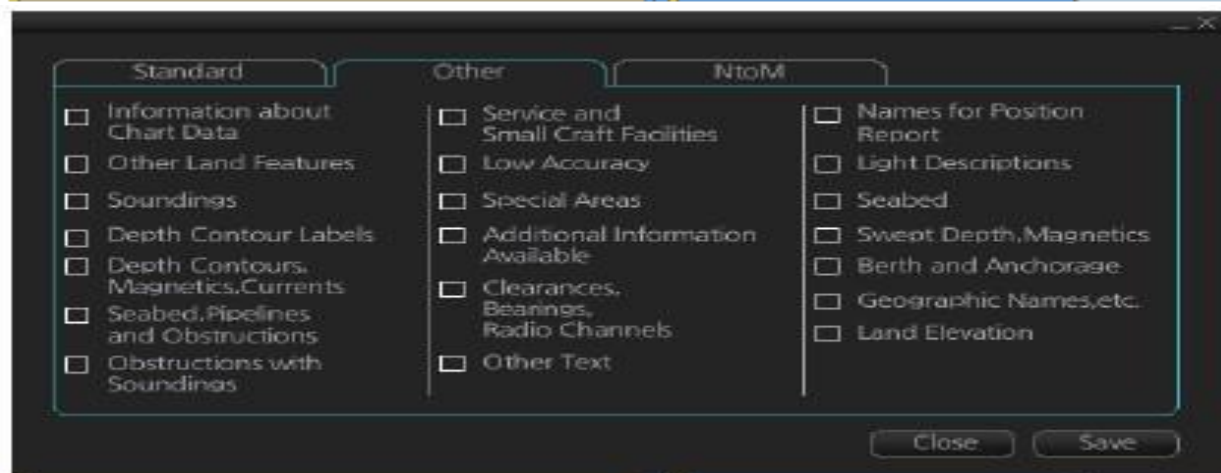
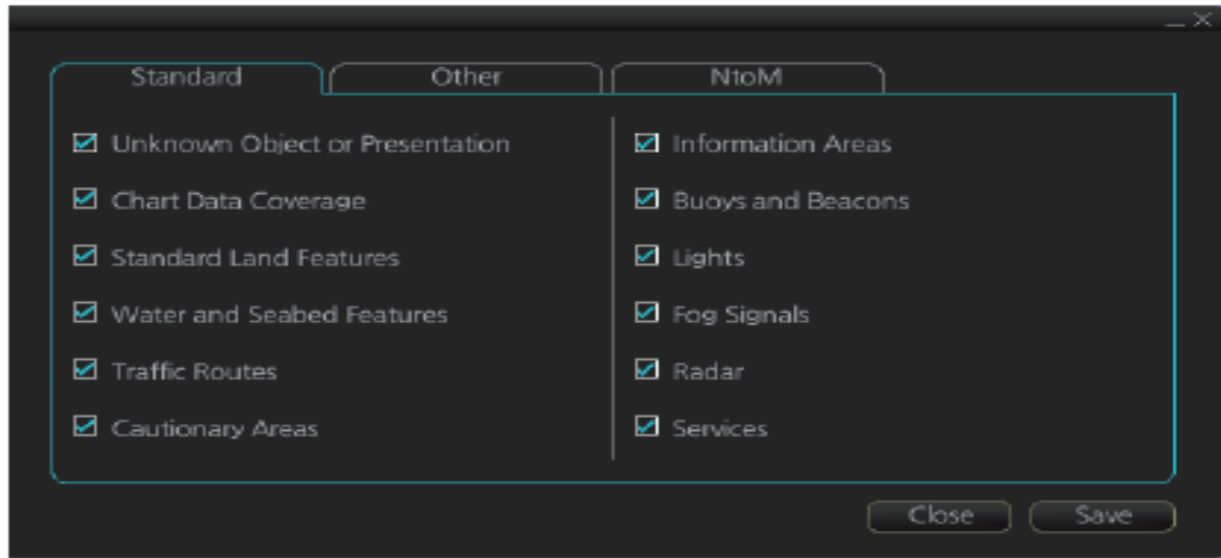


VESSEL : _____

DATE : _____

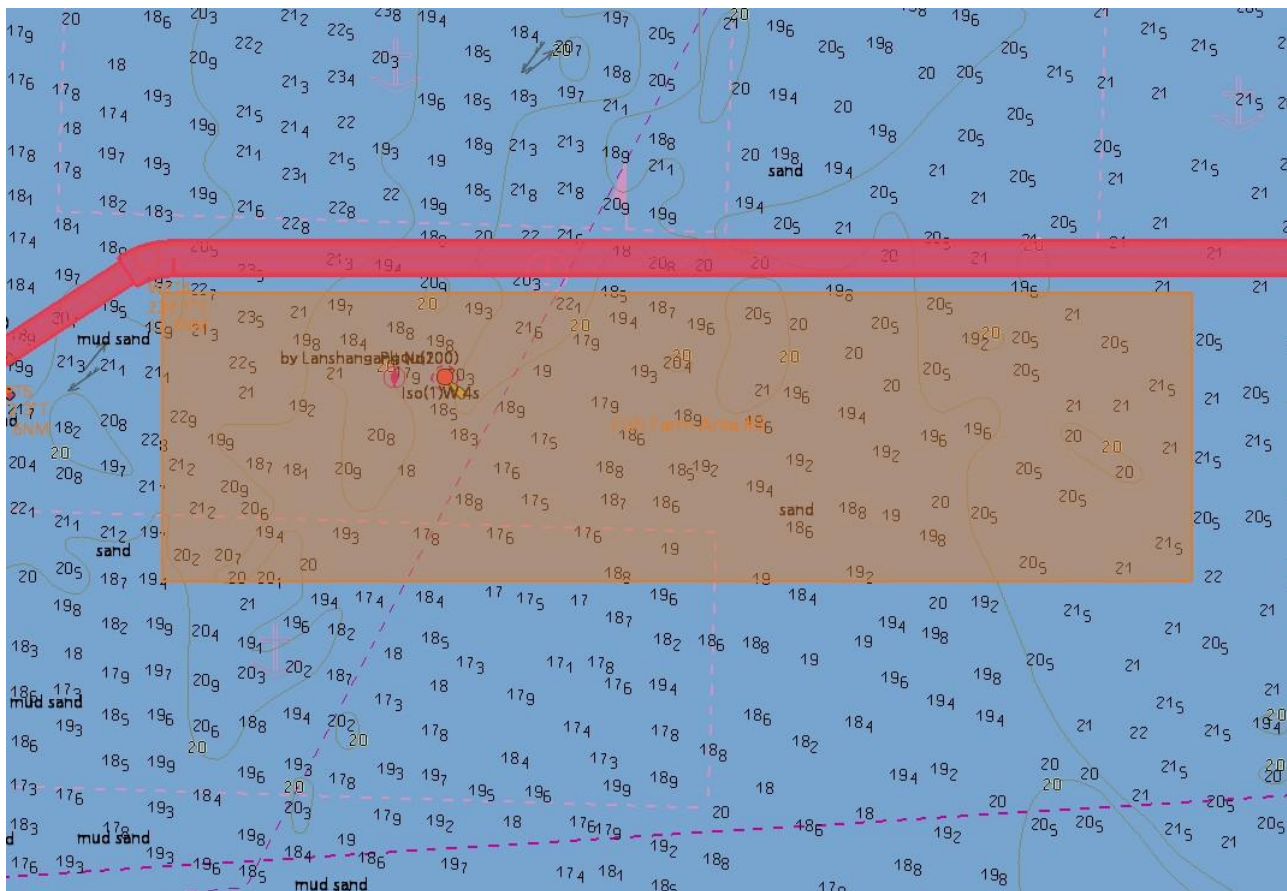
Details of Training: Use of Chart Display Menu (As per Chapter 4.2.3 of ECDIS Manual)



- Fish farms and traps may not be included in AIO updates such as in areas like China. Ship staff shall endeavour to obtain the same through local agent, nav warnings etc
- 2NO shall manually input this information as user charts and link them to the voyage. Refer section 9.4.2 of ECDIS MANUAL –How to use the User Chart Page

Example Fishing Area # 3:

- A) 35 01.600N 119 36.200E
- B) 35 03.300N 119 36.200E
- C) 35 03.300N 119 43.700E
- D) 35 01.600N 119 43.700E



Bridge team shall choose items in chart display functions relevant for navigation in the prevailing area.

ECDIS shall not be over cluttered with information that is not useful

Chart Alert

How to select objects used in chart alerts

You can also include calculation areas that have to be noted when sailing (for example, restricted areas). To include these areas in chart alerts, do the following:

- Click the [DISP], [SET] and [Chart Alert] buttons on the InstantAccess bar to show the [Chart Alert] page.



- Click a letter indication to select the type of alert, warning or caution, to receive for the fiven chart object. [Safety Contours] is fixed to "A" (Alarm).

W: Warning, visual and aural alerts

C: Caution, visual alert only

In the example above, [Safety Contour] provides an [Alarm], and all other items are set for [Warning].

- Click the [Save] button to finish.

List of Areas

There are the areas that the ECDIS detects and provides the audible alert and / or visual alert if estimated own ship position or planned or monitored route across the area defined on the [Chart Alert] page. You can choose from the following areas :

- Safety Contour
- Areas to be Avoided
- User Chart Danger
- Traffic Separation Zone
- Inshore Traffic Zone
- Restricted Area
- Caution Area
- Offshore Production Area
- Military Practice Area
- Seaplane Landing Area
- Submarine Transit Lane
- Anchorage Area
- Marine Farm / Aqua Culture
- PSSA Area
- Non-official ENC
- No Vector Chart
- Not Up-To-Date
- Permit Expired
- UKC Limit

Above has been read and understood.

Master:

CO:

2O:

3O:

D/C